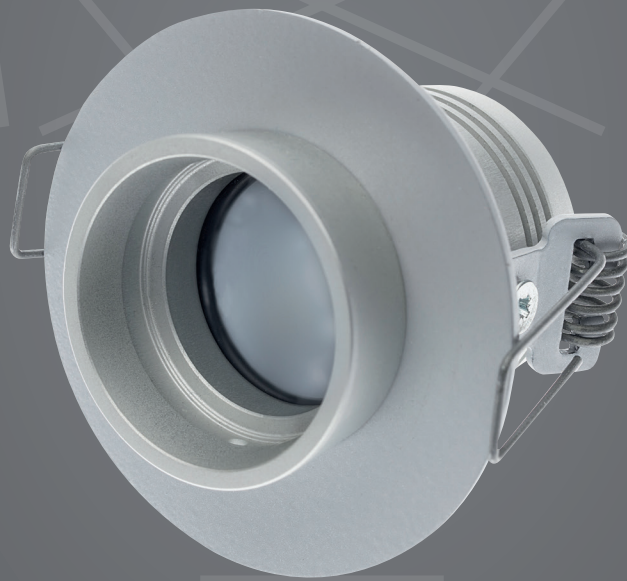


# Procédés Hallier Collection

## ◉ Mini fixed recessed spotlight 3W

Recessed ceiling spotlight

# LUNEA



A tool at the service of professionals



Made in France

D e s i g n e r - M a n u f a c t u r e r

[www.procedeshallier.fr](http://www.procedeshallier.fr)



# Procédés Hallier Collection

## ► Mini fixed recessed spotlight 3W



Recessed ceiling spotlight

# LUNEA

### ► Technical data



Power: 3W

CRI 90 in 2800 K, 3000 K and CRI 95 in 4000 K (R9>90)

External LED driver (not included)

Voltage In:

220 to 240 V, AC 50-60 Hz

output current 700 mA

Beam angle 10° or 25° or 40° (to select)

Material: Aluminium

Finish: Black or Grey anodizing

### ► Options

DALI LED driver

DMX LED driver

BLUETOOTH controlled by iPhone, computer or dimmable bluetooth power switch ENOCEAN

Filter holder

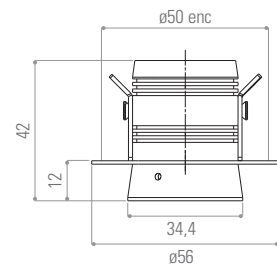
LED driver

Electric connector

Dimmable

Other colors available on request (powder paint)

### ► Dimensions (mm)



### ► Photometry

LUNEO 4000 K 3W 700 mA  
CRI 95 10°

| Distance (m) | Beam Diameter (cm) | lux  |
|--------------|--------------------|------|
| 1m           | (ø70cm)            | 3940 |
| 1,5m         | (ø100cm)           | 1967 |
| 2m           | (ø130cm)           | 1110 |
| 3m           | (ø150cm)           | 432  |

Measures taken from right  
in the front of the spotlight

LUNEO 4000 K 3W 700 mA  
CRI 95 25°

| Distance (m) | Beam Diameter (cm) | lux  |
|--------------|--------------------|------|
| 1m           | (ø80cm)            | 2230 |
| 1,5m         | (ø120cm)           | 1090 |
| 2m           | (ø170cm)           | 620  |
| 3m           | (ø300cm)           | 275  |

Measures taken from right  
in the front of the spotlight

LUNEO 4000 K 3W 700 mA  
CRI 95 40°

| Distance (m) | Beam Diameter (cm) | lux  |
|--------------|--------------------|------|
| 1m           | (ø140cm)           | 1540 |
| 1,5m         | (ø200cm)           | 813  |
| 2m           | (ø250cm)           | 450  |
| 3m           | (ø350cm)           | 198  |

Measures taken from right  
in the front of the spotlight



Made in France

Factory & Head office: 69, rue Victor Hugo 93100 MONTREUIL - FRANCE

Tel. +33 (0)1 48 51 79 88 • contact@procedeshallier.fr

